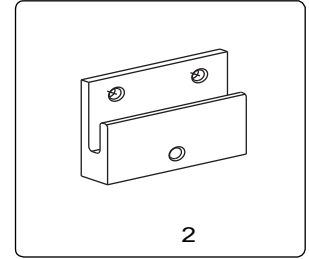
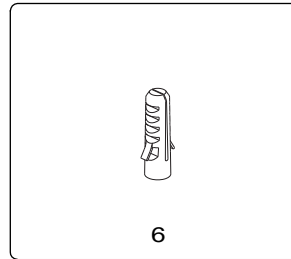
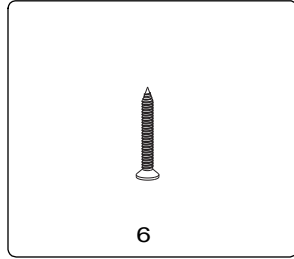
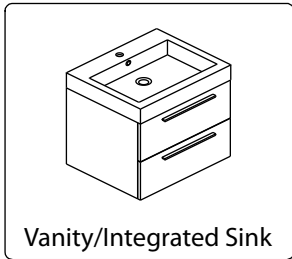




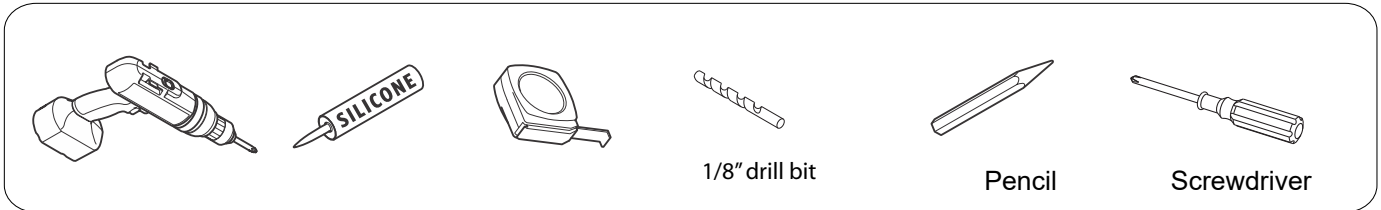
WALL-HUNG VANITY INSTALLATION GUIDE

- Prior to installation please check received items against the "Packing List". Please report any missing items to your retailer immediately.
- Protect all surfaces from sharp objects, high heat sources, direct prolonged sunlight and chemical hazards.
- Professional insllation recommended

PACKING LIST

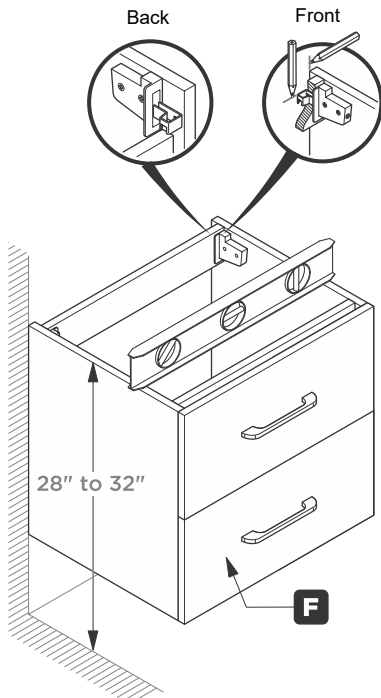


REQUIRED TOOLS NOT IN BOX

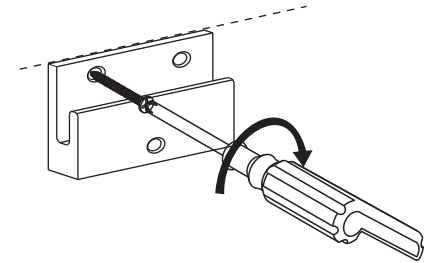


INSTALLATION INSTRUCTIONS

1 Locate the cabinet and mark desired location using a level

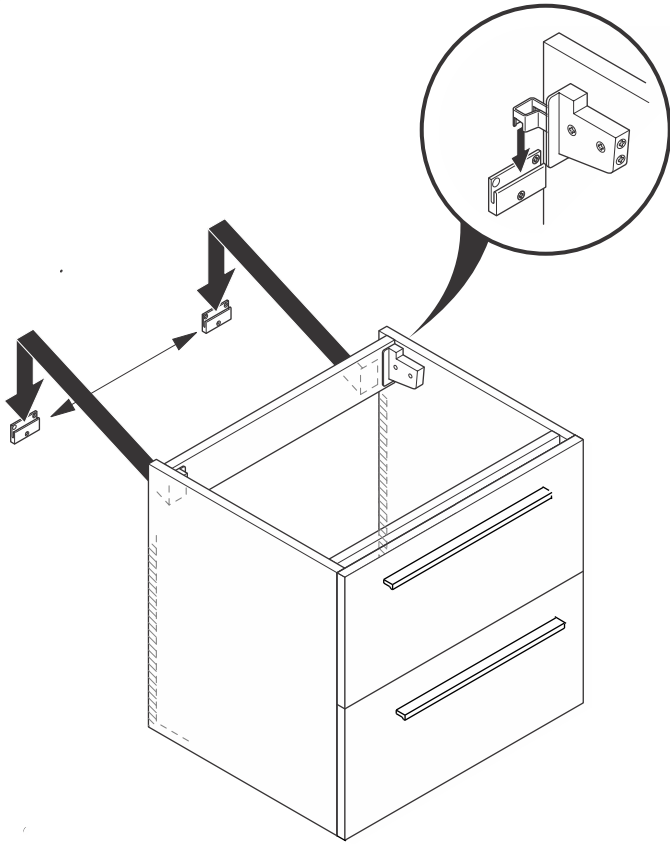


2 Mount the brackets to the wall

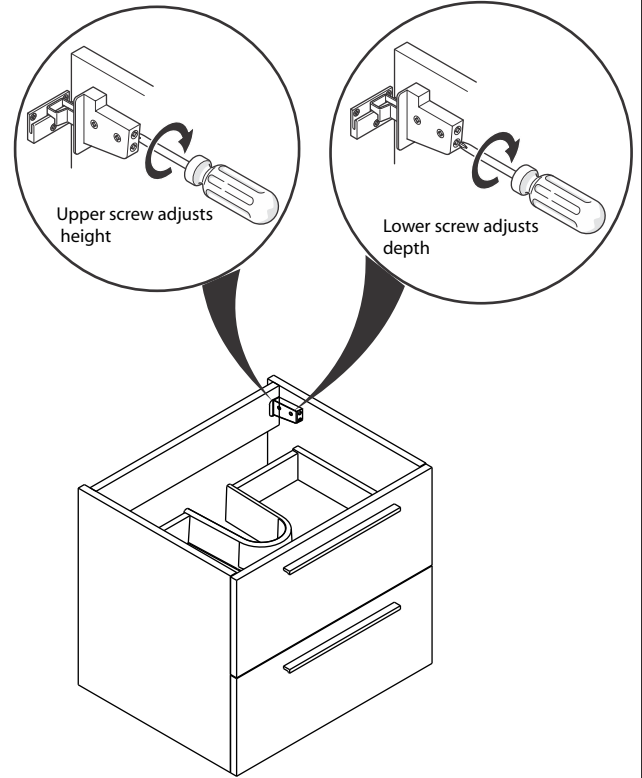


SCREWS PROVIDED DO NOT ATTATH TO ALL WALLS, PLEASE CONSULT A PROFESSIONAL FOR THE PROPOER SCREWS TO USE FOR YOUR WALL CONSTRUCTION.

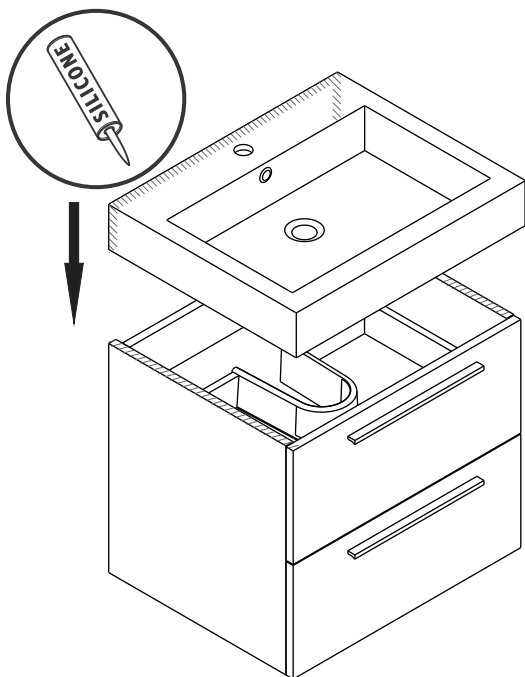
3 Remove drawer, then hang the cabinet on the brackets



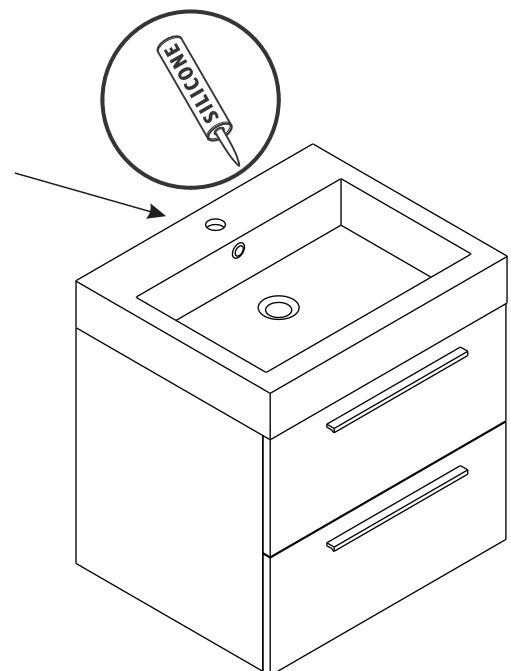
4 Adjust the mounting mechanism to secure the cabinet to the desired position



5 Apply silicone to top and side edges of the cabinet, and back of the sink, place the sink on the cabinet

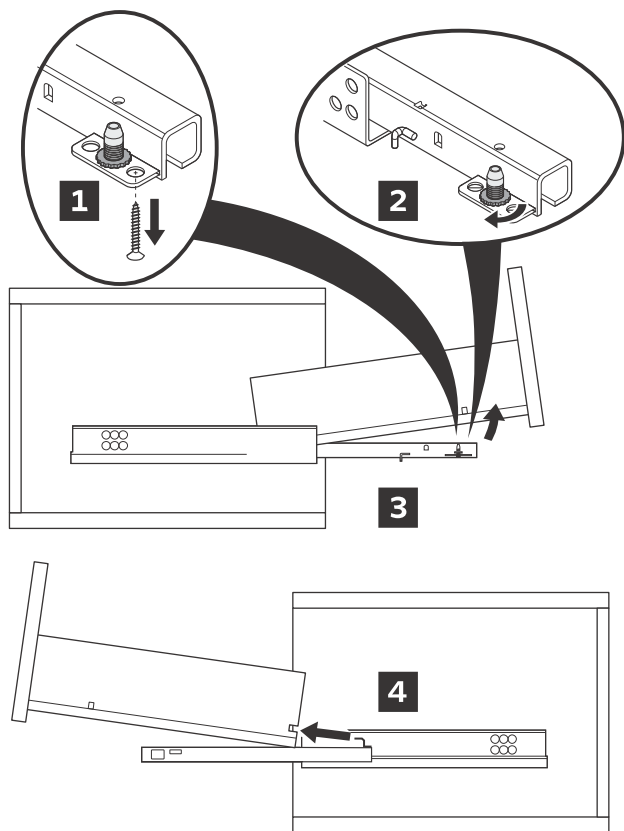


6 Apply silicone to the gap between the top and the wall. The cabinet should be mounted on studs or similar in-wall reinforcement only. Never mount the cabinet on drywall alone



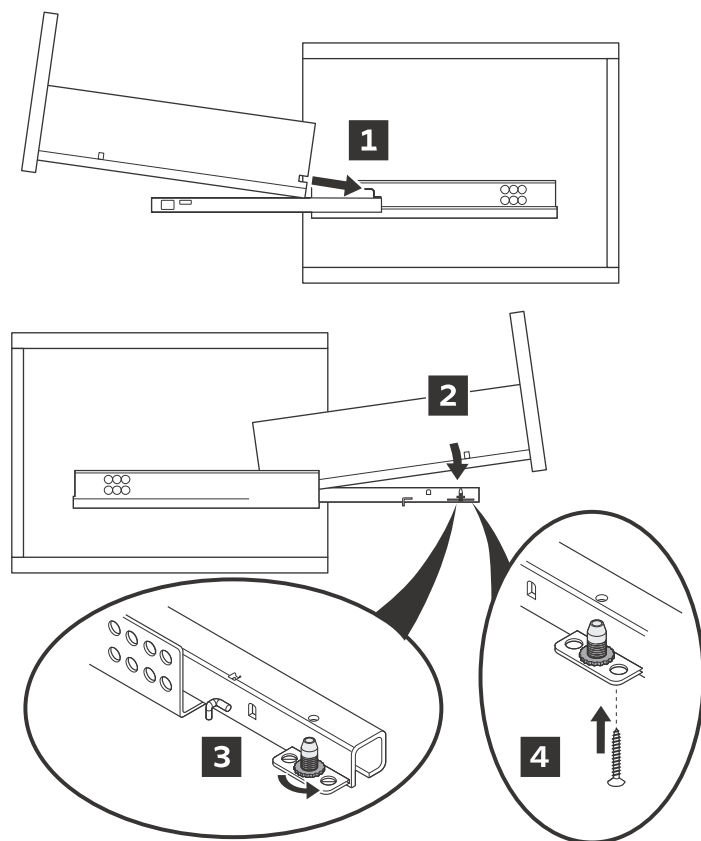
DRAWER REMOVAL AND INSTALLATION

REMOVAL



- Step 1: Remove both screws (one on each side)
- Step 2: Loosen the wheels next to the screw.
- Step 3 & 4: Pull the drawer up, then out.

INSTALLATION



- Step 1 & 2: Push the drawer in; ensure it is hooked onto the rails.
- Step 3: Adjust the wheels.
- Step 4: Tighten the screws.